



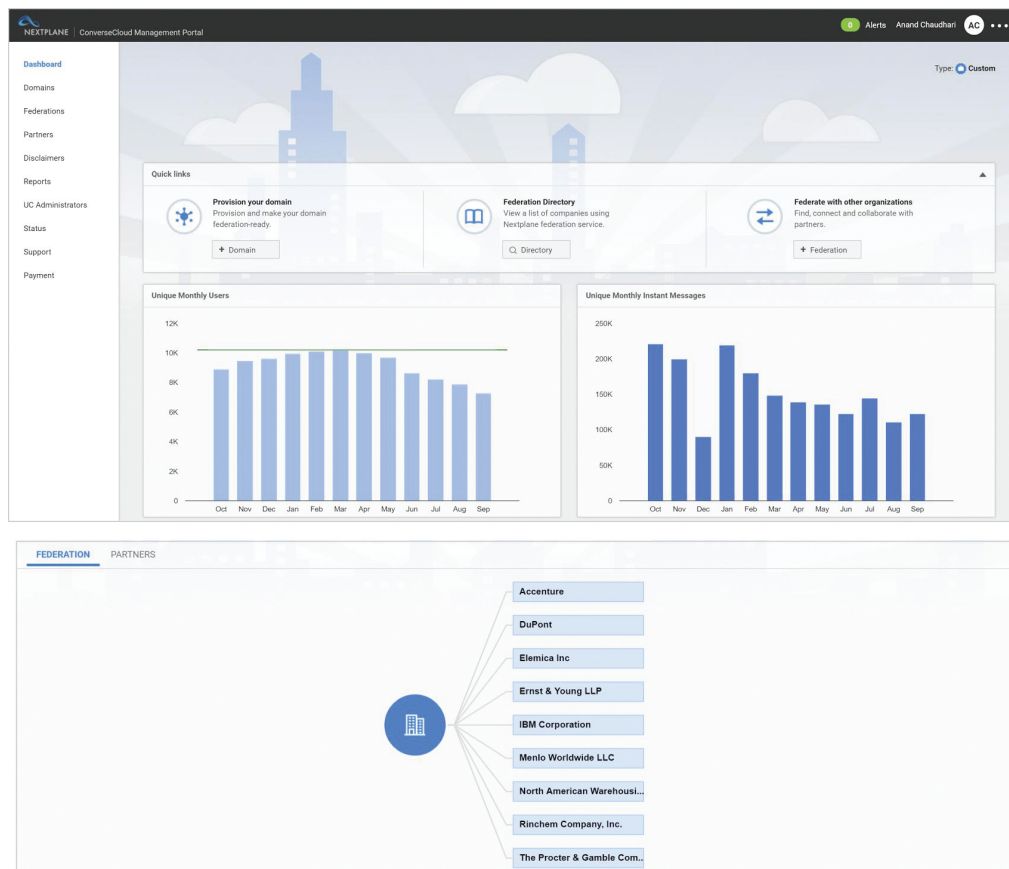
NEXTPLANE MANAGEMENT PORTAL DATASHEET

The NextPlane Management Portal is a secure web-based application designed to simplify the process of establishing and managing all your external and internal federations from a central location. You can manage all aspects of the federation process and view and download usage reports.

Dashboard

The NextPlane management portal's dashboard conveniently displays your monthly service usage, both as the number of unique users per month, and the number of IM messages exchanged per month.

Also, it shows your federations relationships graphically, as well as how other organizations are related to your company. The partner tab shows if you are paying for the federation or your partner is paying for the federation.





NEXTPLANE MANAGEMENT PORTAL DATASHEET

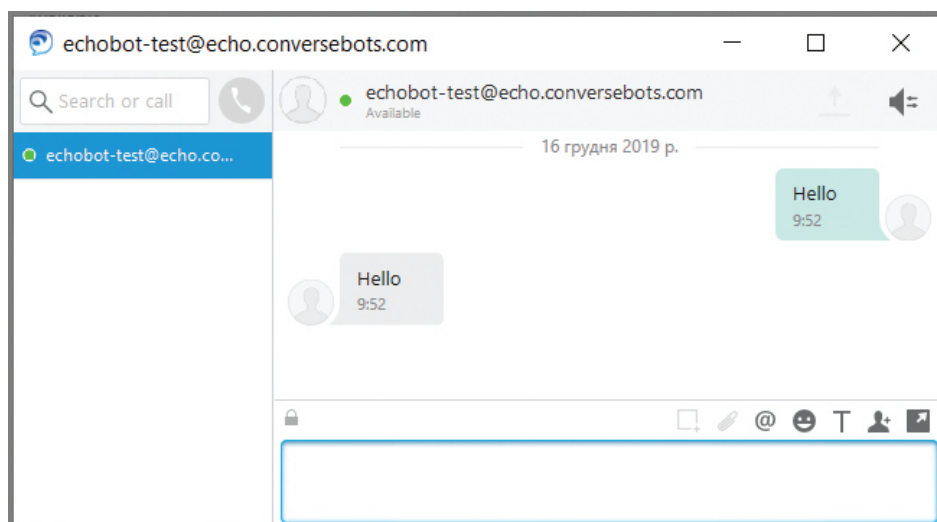
Provision Domains

As the administrator of your collaboration platform, you can easily provision (on-board) your collaboration platform's domain(s) on NextPlane ConverseCloud. This includes platform-specific steps required to establish the federation between your collaboration platform and the ConverseCloud Service.

The screenshot shows the NextPlane Management Portal interface. On the left is a sidebar menu with options: Dashboard, Domains (highlighted), Federations, Reports, UC Administrators, Status, Support, and Payment. The main content area is titled 'Domain Details' and features a progress bar with three steps: 'Domain Details' (active), 'Federation-Readiness Checklist', and 'Review & Submit'. Below the progress bar is a form with two fields: 'Domain Name' with the value 'my.domain.com' and 'UC Platform' with a dropdown menu. The dropdown menu is open, showing a list of platforms: 'Select Platform', 'Cisco UCM IM and Presence Service', 'Cisco WebEx Messenger' (highlighted), 'Cisco WebEx Teams', 'IBM Sametime 9.x', 'Jive OpenFire', and 'Microsoft Lync 2010'.

Self-test domains

You can quickly verify you have successfully provisioned your collaboration platform on ConverseCloud by performing a quick test with the ConverseCloud Echo bot (echobot-test@echo.conversebots.com)



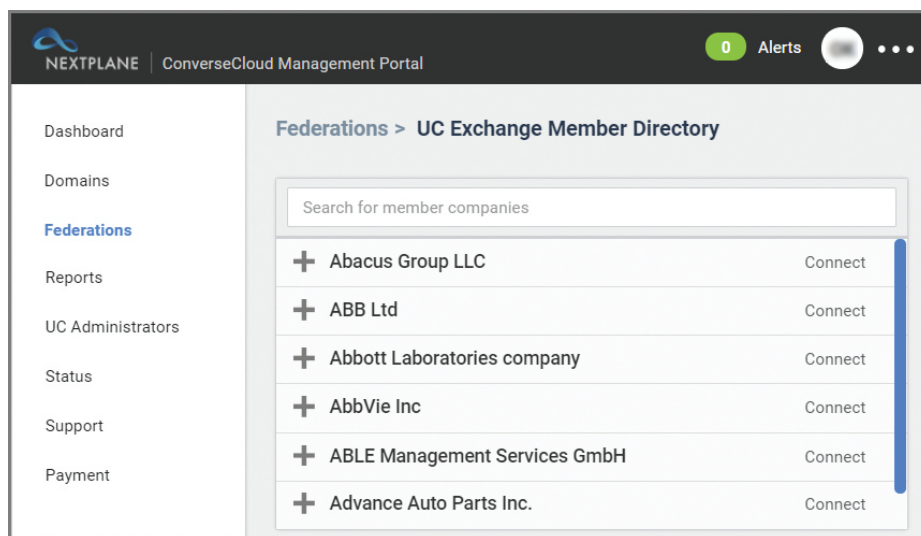


NEXTPLANE MANAGEMENT PORTAL DATASHEET

Directory of Federation-Ready Organizations

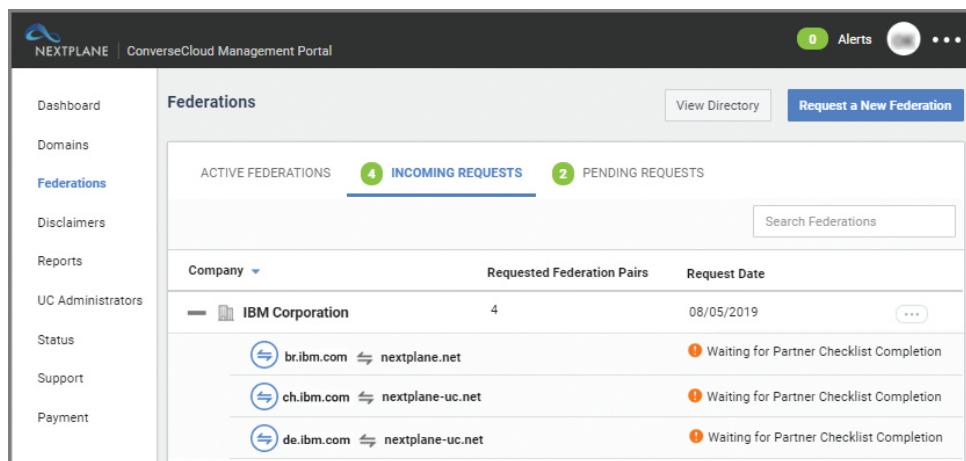
The NextPlane Management Portal provides a directory of federation-ready companies. Similar to a social network, the portal allows organizations to friend each other and connect to other federation-ready companies by sending federation requests. They can also send partner organizations invitations to join the platform.

You can track the status of federation requests, receive notification of their approval or rejection, and receive confirmation that a federation is active.



Federation Management

You can respond to federation requests from other federation-ready organizations directly from the NextPlane Management Portal. This includes receiving federation requests from other members, responding with approval, rejection, performing additional UC-specific steps to establish the federation, and receiving confirmations via email when a federation has been successful.





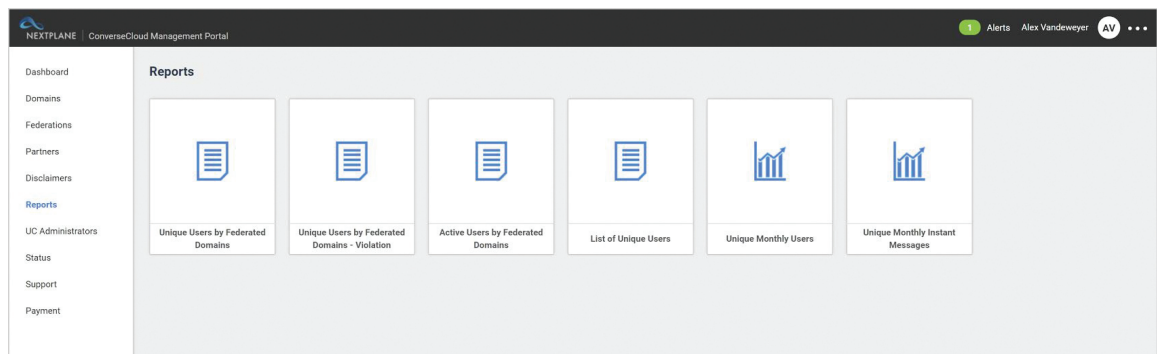
NEXTPLANE MANAGEMENT PORTAL DATASHEET

Reports and Analytics

The reporting tab on the management portal provides access to summary and detailed reports. Using the reporting feature of the management portal, you can track your service usage and view the following reports:

- » Unique Users by Federated Domains
- » Unique Users by Federated Domains - Violation
- » Active Users by Federated Domains
- » List of Unique Users

Reports are generated monthly and offer both graphical and raw data via .csv download, to provide the necessary tools to manage your ConverseCloud services. The management portal provides graphical reports that indicate unique monthly users and unique monthly messages. You may also view activity across domains and federations, including any communication outside your existing federations.



Payments

You can conveniently pay your NextPlane invoices through the NextPlane Management Portal with any major credit card (Visa, Mastercard, Discover, American Express).

Billing Information

Card Number

9999888877776666

Cardholder's Name

Derek Erikson

Expiration

1121

CVC

123

Street Address

High Street

Street Address (line 2)

High Street

City

Concord

State

California

ZIP/Postal code

94521

Country

United States

Make a Payment